



GAT MONTHLY MEMBERSHIP PROGRESS REPORT

Results as of: 2/28/2022

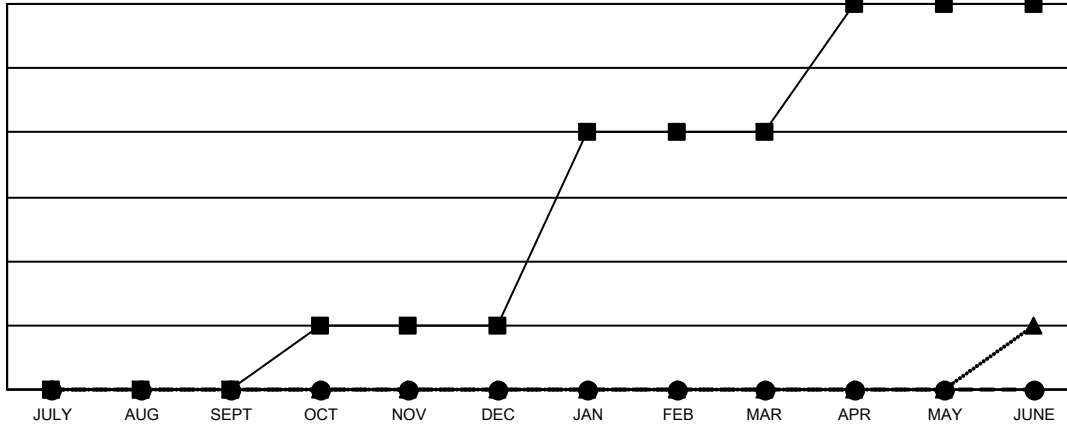
Multiple District 24

LOCATION: VIRGINIA

Clubs			
RESULTS FOR 2021-2022			
QUARTER	NEW CLUB GOAL	NEW CLUBS	DROPPED CLUBS
JULY/AUG/SEPT	0	0	5
OCT/NOV/DEC	1	0	0
JAN/FEB/MAR	3	0	2
APR/MAY/JUNE	2	0	0

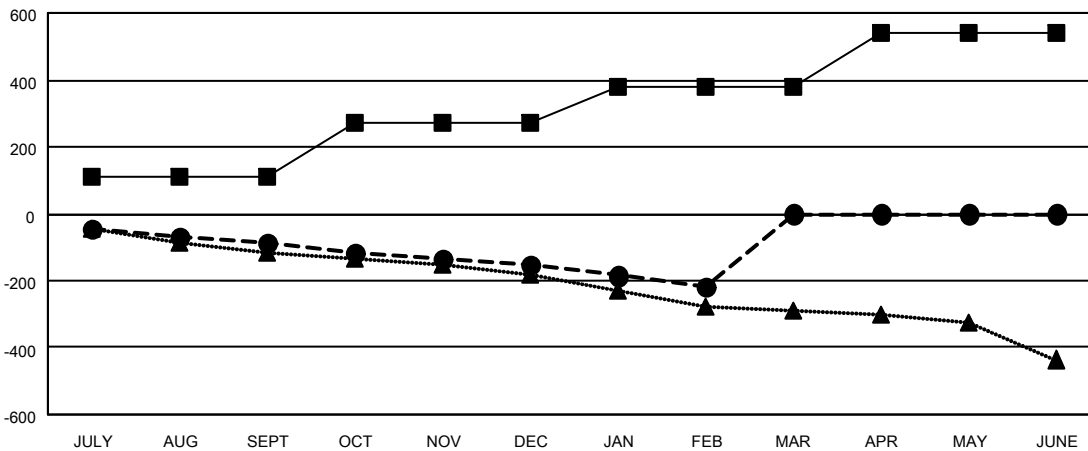
Members			
RESULTS FOR 2021-2022			
QUARTER	MEMBER GROWTH NET GOAL	MEMBER GROWTH ACTUAL	DROPPED MEMBERS ACTUAL (including transfers)
JULY/AUG/SEPT	110	172	225
OCT/NOV/DEC	160	114	167
JAN/FEB/MAR	110	80	125
APR/MAY/JUNE	160	0	0

GOALS AND ACTUAL NEW CLUBS CUMULATIVE



- CURRENT YEAR GOALS FOR NEW CLUBS
- CURRENT YEAR ACTUAL NEW CLUBS
- ▲- LAST YEAR ACTUAL NEW CLUBS

GOALS AND ACTUAL MEMBERS CUMULATIVE



- MEMBER GROWTH NET GOAL
- MEMBER GROWTH ACTUAL
- ▲- LAST YEAR MEMBERSHIP ACTUAL

DROPPED CLUBS: 7	
DROPPED MEMBERS	
DECEASED	96
CLUB CANCELLED	49
OTHER	371
TOTAL	516

106 CLUBS OF 243 ADDED 1 OR MORE NEW MEMBERS

[CLICK HERE FOR CUMULATIVE MEMBERSHIP DATA](#)

GENDER DISTRIBUTION	
MALE	3,646 (64.47%)
FEMALE	2,009 (35.53%)
NON BINARY	0 (0.00%)
PREFER NOT TO ANSWER	0 (0.00%)
TOTAL FAMILY UNIT MEMBERS	983
FAMILY MEMBERS PAYING HALF DUES	495